

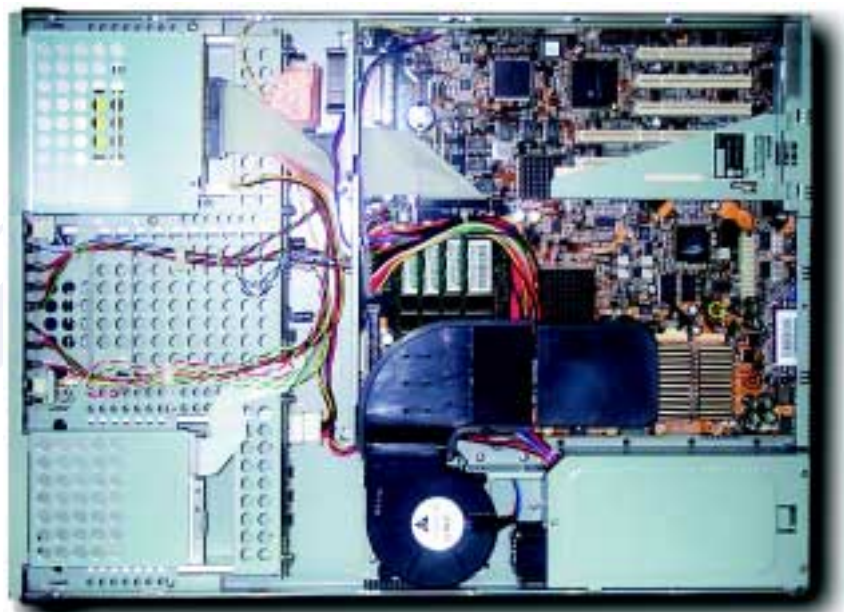
R5110

Density-optimized 1U Dual PIII Serverworks barebone system



Rioworks' R5110 is the density-optimized server for space conscious front-end networking sites requiring high levels of reliability and performance in a rack-ready form factor. The RCC/ServerWorks chipset based system supports dual Intel Pentium III CPU with 133MHz Front side bus as well as PC133 Registered ECC SDRAM for up to 4GB system memory. This truly state-of-art barebone server solution combines our powerful SDRCB motherboard with our innovative density-optimized 1U server chassis bundling 3 SCSI hot-swappable HDD bays.

This performance density R5110 also reserves an extra PCI slot riser for user expansion.



Space saving 1U rack optimized server

Full function LED set for system fan, temp, and HDD status

3 SCSI hot-swap HDD bays

Slim CD-ROM and FDD

Serverworks LE chipset with 133MHz front side bus

PC133 register ECC SDRAM memory, expandable to 4GB

One full size 64bit/66MHz PCI expansion

Dual 10/100 NIC for automatic fault tolerance (AFT) and automatic loaded blance

Standard 4MB embedded VGA

Integrated Rioworks™ SmartWatch™ Server Management

Features / Benefits

Space saving 1U rack optimized server R5110 supporting 3 hot-swap HDDs, FDD&CD-ROM, and one extra 64bit/66MHz expansion slot is the optimized performance density rack-mount server.

Flex/Upscale CPU Solution

FC-PGA sockets support both the latest Coppermine 133FSB(Front Side Bus) and 100FSB.

Configured to the Symmetric Dual-capable system

Applied to the latest design, SDRCB architecture is transparent to adopt the second CPU upgrade, as well as the multiprocessing/multithreaded environment for the standard operating system and application software. Starting from a basic single CPU, you can double the system processing power to protect your investment for the need of business growth - simply add the second CPU.

Upsize the Memory bandwidth and capability

The PC133 memory architecture increases the memory subsystem throughput to 1.0GB/s with Registered SDRAM. The four DIMM sockets provide system memory up to 4GB with ECC support. Moreover, the 25 degree DIMM sockets are best fitted 1U limited height.

VGA onboard

The onboard VGA with 4MB memory will meet server graphic requirements and eliminate users the hassle, time-consuming and considerable expense of purchasing and installing costs.

Highly integrated Ethernet/U160 SCSI

Designed for business mission oriented system, the SDRCB embeds two 10/100Mb LAN controllers and multithreading dual U160 SCSI functions onboard.

Full Size PCI 64/66 Expansion

This system also supports one extra full size 64bit/66MHz PCI expansion.

Hardware Monitor and System Management

Integrated hardware monitoring of fans, temperature/thermal, voltage and chassis intrusion, Rioworks™ SmartWatch™ will notify the critical status of system events to prevent from the system data loss.

Specification

Processor

Dual FC-PGA: Coppermine 533MHz-1GB+
Integrated VRM complies to spec 8.4

Chipset

RCC Champion 3.0LE Dual Processor capability for 133 Front Side Bus supporting and PC133 Memory
64bit/66MHz PCI bus

System BIOS

AMI BIOS
I2O support
Remote console redirection
MP 1.1 & 1.4 compliant
SMBIOS 2.3 compliant
DMI 2.0 compliant
Soft Power-down
Secure Boot
Multiple boot support
Y2K compliant

System/IO-bus

133/100 Front Side Bus
PC133 Memory

Main Memory

Four 25 degree DIMM slots support up to 4GB ECC Registered SDRAM memory capability

Onboard Dual SCSI

Dual ultra3 SCSI channels for bandwidth up to 320MB/s

Onboard Multi I/O

Winbond super I/O with hardware monitor
Two serial ports with UART 16550
One parallel port with ECP/EPP support
Dual onboard USB connectors
PS/2 mouse and keyboard connectors with Wake-up function

Device Bays

Three hot-swap SCA-2 bays for Ultra160 SCSI HDDs
Slim FDD&CD-ROM

PFC switching Power Supply

200W PFC switching power supply

Hardware monitor and System management

Hardware monitor of CPU Thermal Protect, CPU/System Fan monitor, Voltage Report, Chassis Intrusion
Rioworks™ SmartWatch™ to alert the event of hardware problem
Prevent from abnormal system down/data loss
Header of Wake On LAN to support the power on features via LAN
IPMI compliance feature connector for MegaRAC

Expansion Slot

one 64bit/66MHz PCI expansion

System Dimension

Space saving 1U form factor with size
605mm (D) x 430mm (w) x 44mm (H)

The specification is subject to change without notice.

The brand and product name are trademarks of their respective companies.